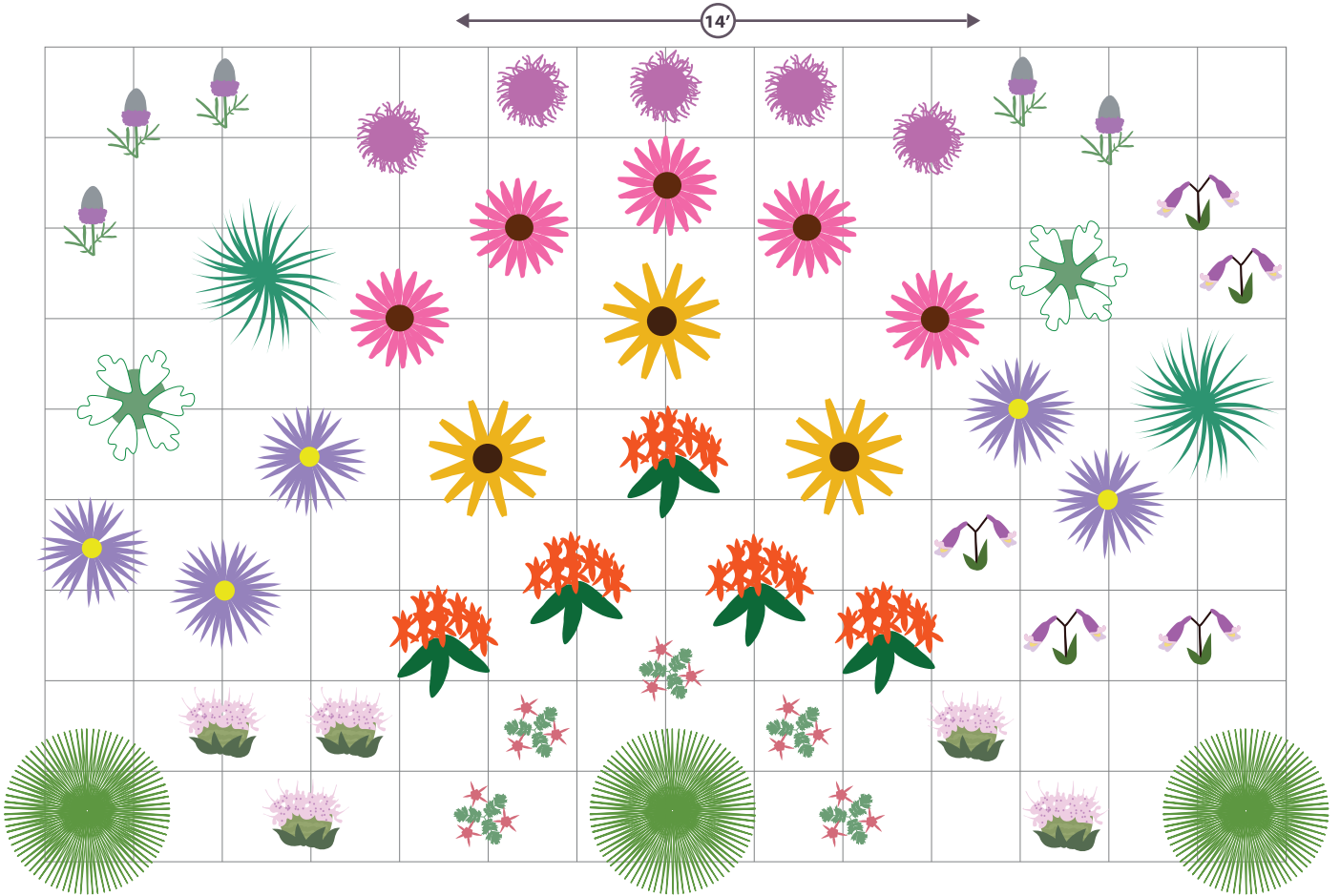


THE COLOSSAL POLLINATOR GARDEN

SPRING 2024

LAYOUT SUGGESTIONS FOR PLANTING



50 PLANTS | 10 Flowers, 2 Grasses | Covers 120 - 150 sq ft.



Butterfly Weed (5)



Bradbury's Monarda (5)



Purple Prairie Clover (5)



Hairy Beardtongue (5)



Purple Coneflower (5)



Slender Mountain Mint (2)



Prairie Smoke (5)



Orange Coneflower (3)



Dense Blazing Star (5)



Aromatic Aster (5)



Prairie Dropseed (3)



Little Bluestem (2)

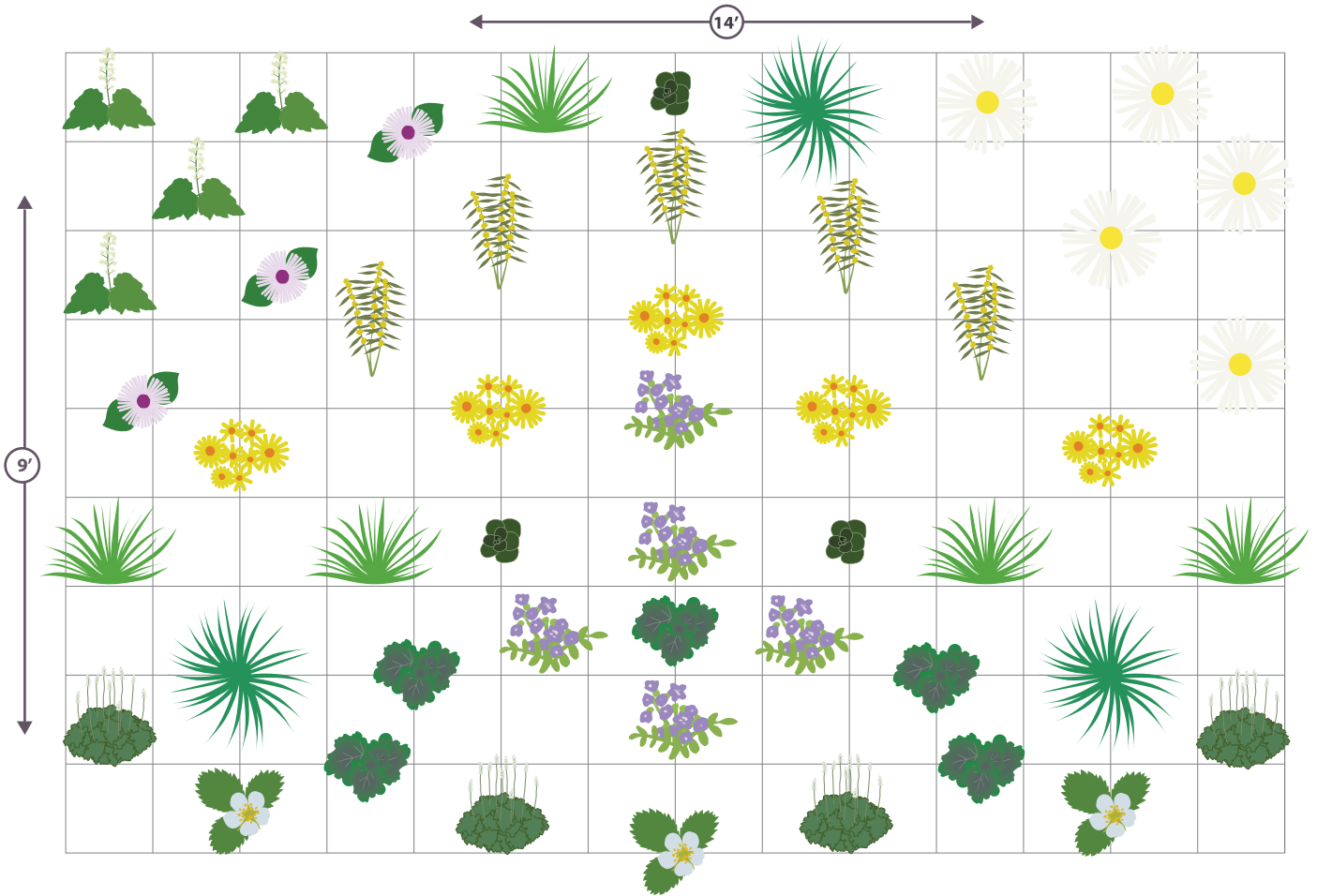


PRAIRIE MOON NURSERY®

(507) 452-1362 | prairiemoon.com

EASTERN SHADE POLLINATOR GARDEN SPRING 2024

LAYOUT SUGGESTIONS FOR PLANTING



50 PLANTS | 10 Flowers, 2 Grasses | Covers 120 - 150 sq ft.

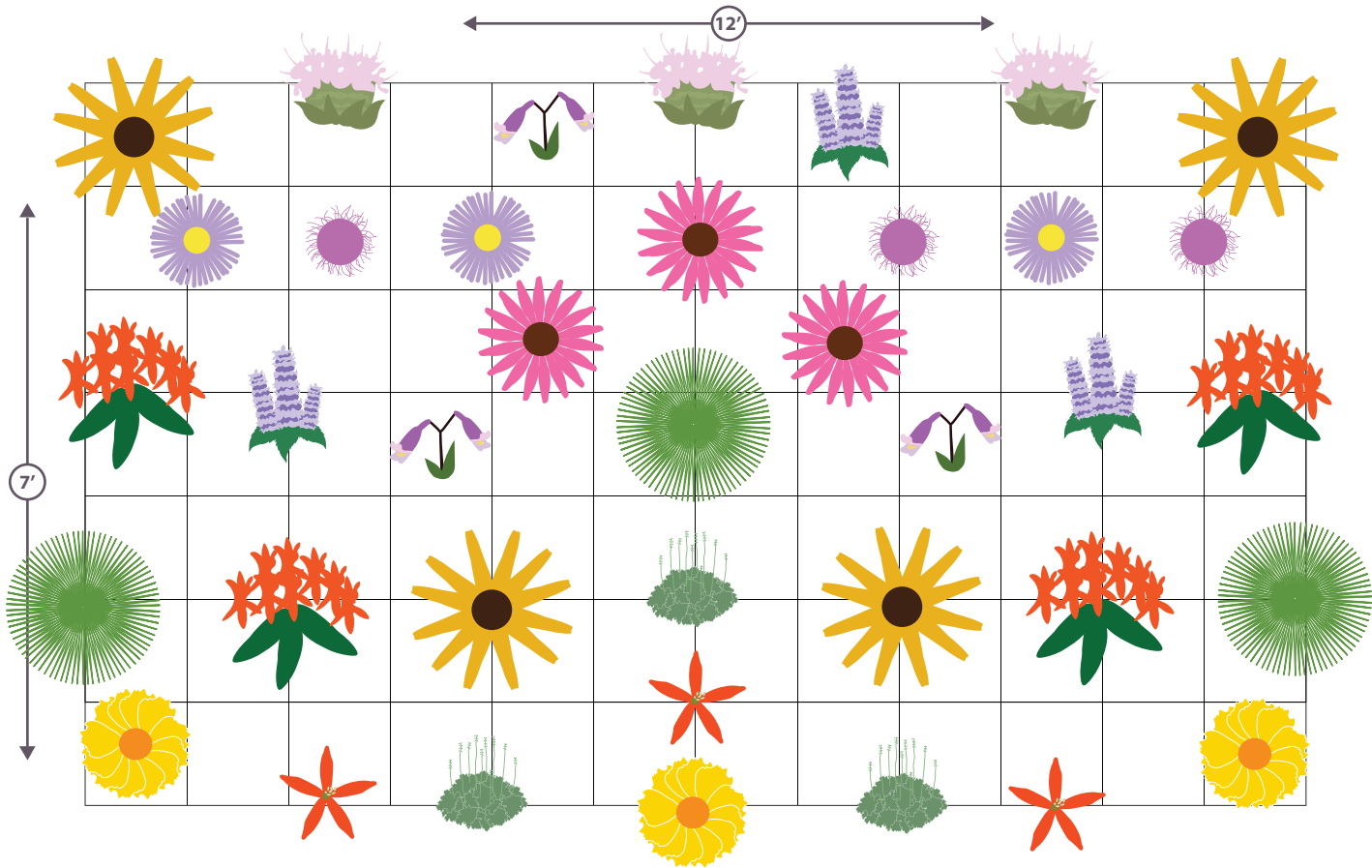
- | | |
|---|---|
|  White Wood Aster (5) |  Wild Stonecrop (3) |
|  Heart-leaved Aster (3) |  Hairy Alumroot (4) |
|  Blue-stemmed Goldenrod (5) |  Foam Flower (4) |
|  Jacob's Ladder (5) |  Golden Ragwort (5) |
|  American Alumroot (5) |  Wild Strawberry (3) |
|  Curly-styled Wood Sedge (5) |  Common Wood Sedge (3) |



THE POLLINATOR GARDEN

SPRING 2024

LAYOUT SUGGESTIONS FOR PLANTING



38 PLANTS | 11 Flowers, 1 Grass | Covers 75 - 100 sq ft.



Anise Hyssop (3)



Wild Bergamot (3)



Butterfly Weed (4)



Hairy Beardtongue (3)



Lance-leaf Coreopsis (3)



Orange Coneflower (4)



Purple Coneflower (3)



Royal Catchfly (3)



Prairie Alumroot (3)



Smooth Blue Aster (3)



Button Blazing Star (3)



Prairie Dropseed (3)

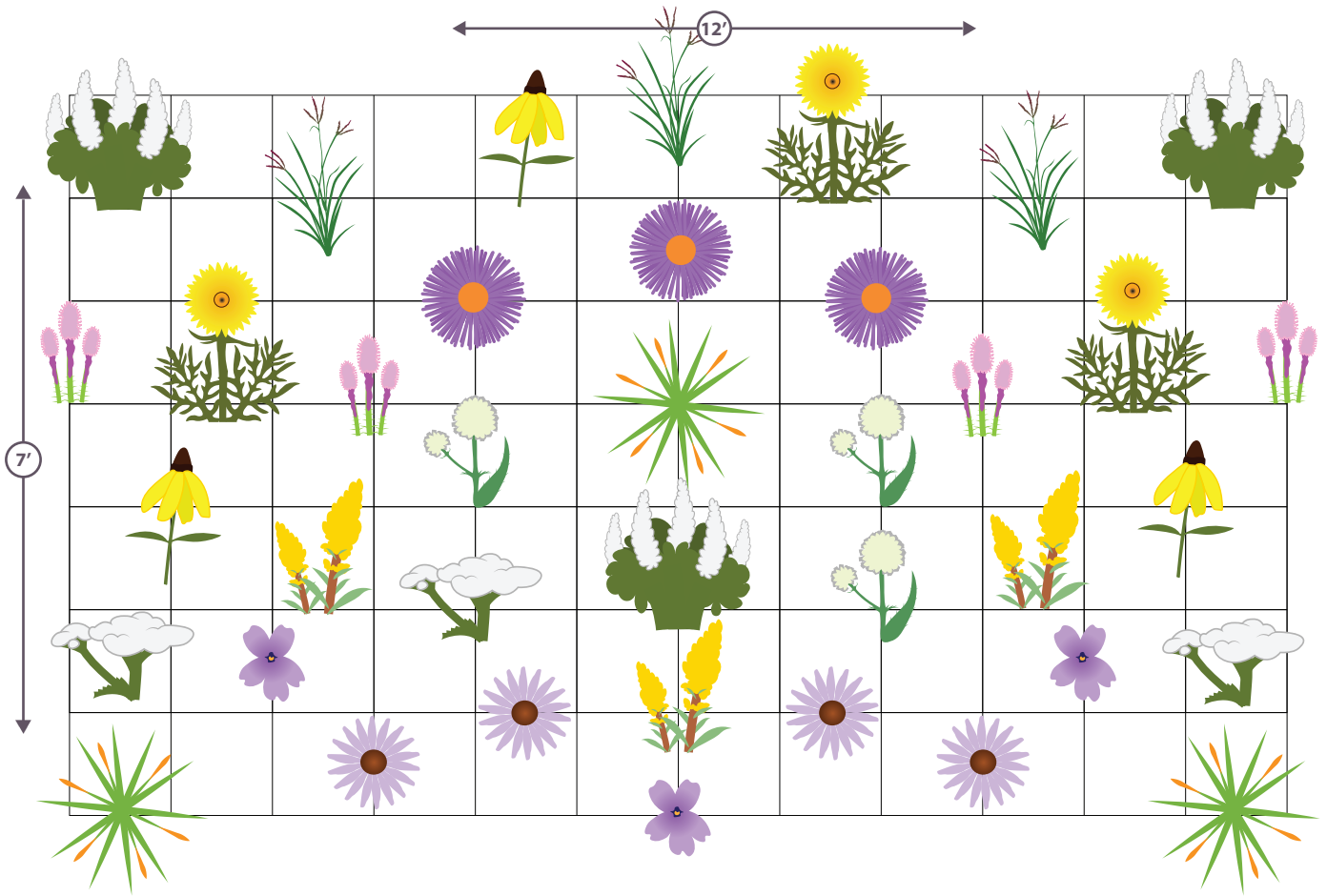


PRAIRIE MOON NURSERY®

(507) 452-1362 | prairiemoon.com

CLASSIC TALLGRASS PRAIRIE GARDEN SPRING 2024

LAYOUT SUGGESTIONS FOR PLANTING



38 PLANTS | 10 Flowers, 2 Grasses | Covers 75 - 100 sq ft.



White Wild Indigo (3)



Yellow Coneflower (3)



Pale Purple Coneflower (4)



Compass Plant (3)



Rattlesnake Master (3)



Showy Goldenrod (3)



Prairie Blazing Star (4)



New England Aster (3)



Wild Quinine (3)



Hoary Vervain (3)



Indian Grass (3)



Big Bluestem (3)



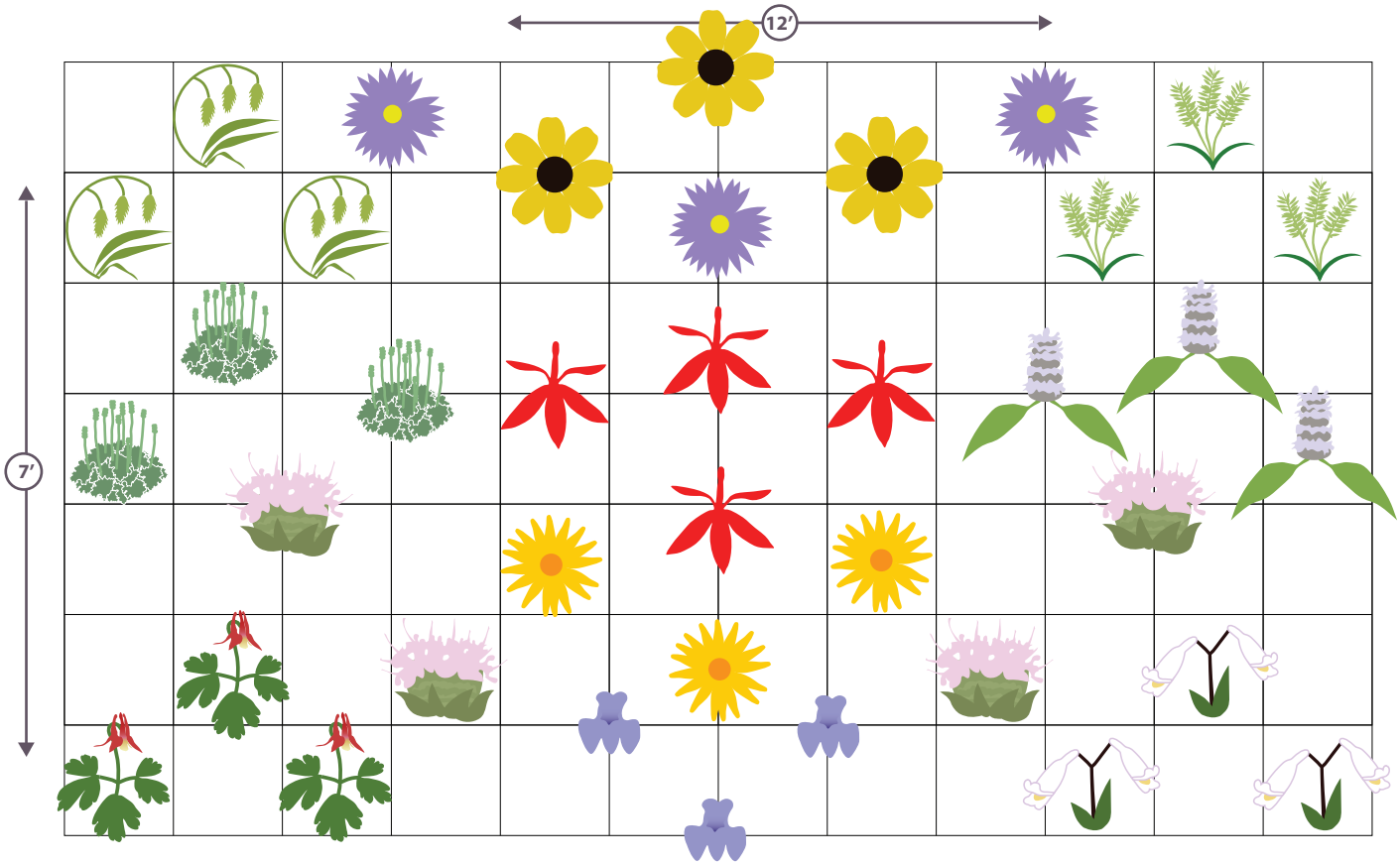
PRAIRIE MOON NURSERY®

(507) 452-1362 | prairiemoon.com

SEMI-SHADE GARDEN FOR POLLINATORS

SPRING 2024

LAYOUT SUGGESTIONS FOR PLANTING



38 PLANTS | 10 Flowers, 2 Grasses | Covers 75 - 100 sq ft.

 Brown-eyed Susan (3)

 Prairie Alumroot (3)

 Great Blue Lobelia (3)

 Short's Aster (3)

 Early Sunflower (3)

 Wild Bergamot (4)

 Columbine (3)

 Cardinal Flower (4)

 Hairy Wood Mint (3)

 Foxglove Beardtongue (3)

 Bottlebrush Grass (3)

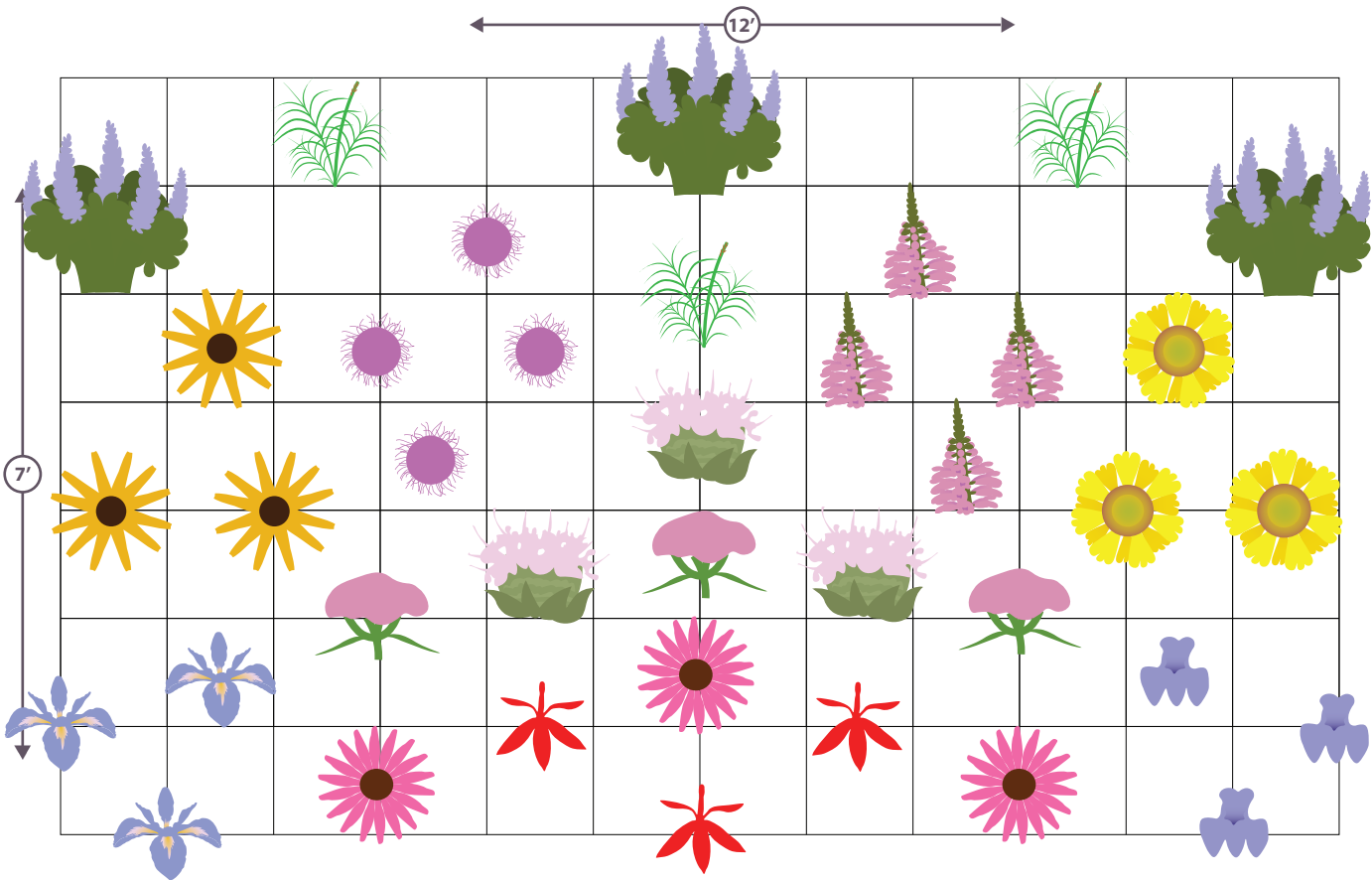
 River Oats (3)



RAIN GARDEN FOR POLLINATORS

SPRING 2024

LAYOUT SUGGESTIONS FOR PLANTING



38 PLANTS | 11 Flowers, 1 Grass | Covers 75 - 100 sq ft.



Blue Wild Indigo (3)



Rose Milkweed (3)



Purple Coneflower (3)



Sneezeweed (3)



Meadow Blazing Star (4)



Palm Sedge (3)



Cardinal Flower (3)



Great Blue Lobelia (3)



Wild Bergamot (3)



Obedient Plant (4)



Orange Coneflower (3)



Southern Blue Flag (3)



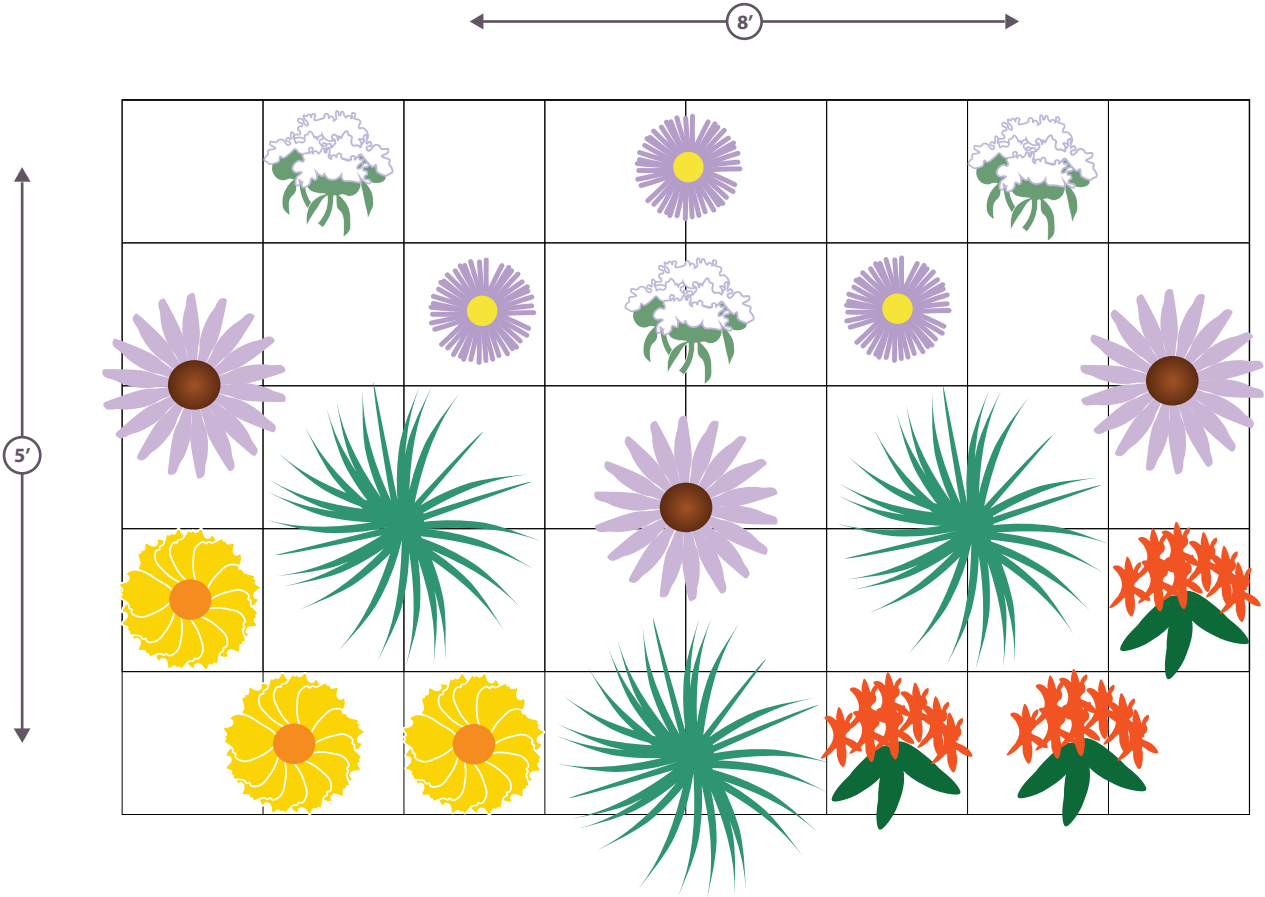
PRAIRIE MOON NURSERY®

(507) 452-1362 | prairiemoon.com

THE POLLINATOR PATCH

SPRING 2024

LAYOUT SUGGESTIONS FOR PLANTING



18 PLANTS | 5 Flowers, 1 Grass | Covers 40 - 50 sq ft.



Butterfly Weed (3)



Hairy Mountain Mint (3)



Lance-leaf Coreopsis (3)



Smooth Blue Aster (3)



Pale Purple Coneflower (3)



Little Bluestem (3)

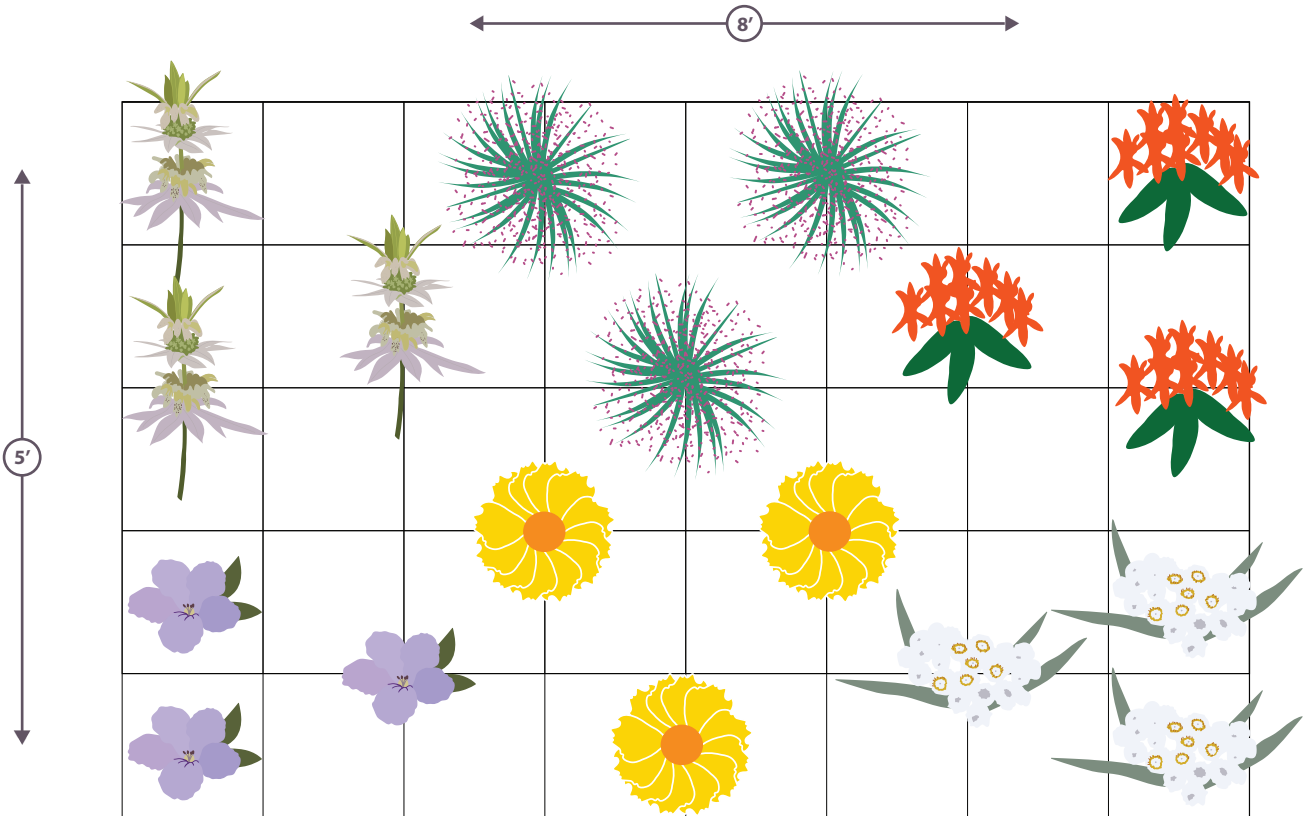


PRAIRIE MOON NURSERY®

(507) 452-1362 | prairiemoon.com

THE EASY STREET PATCH SPRING 2024

LAYOUT SUGGESTIONS FOR PLANTING



18 PLANTS | 5 Flowers, 1 Grass | Covers 40 - 50 sq ft.



Pearly Everlasting (3)



Spotted Bee Balm (3)



Butterfly Weed (3)



Wild Petunia (3)



Lance-Leaf Coreopsis (3)



Purple Love Grass (3)



PRAIRIE MOON NURSERY®

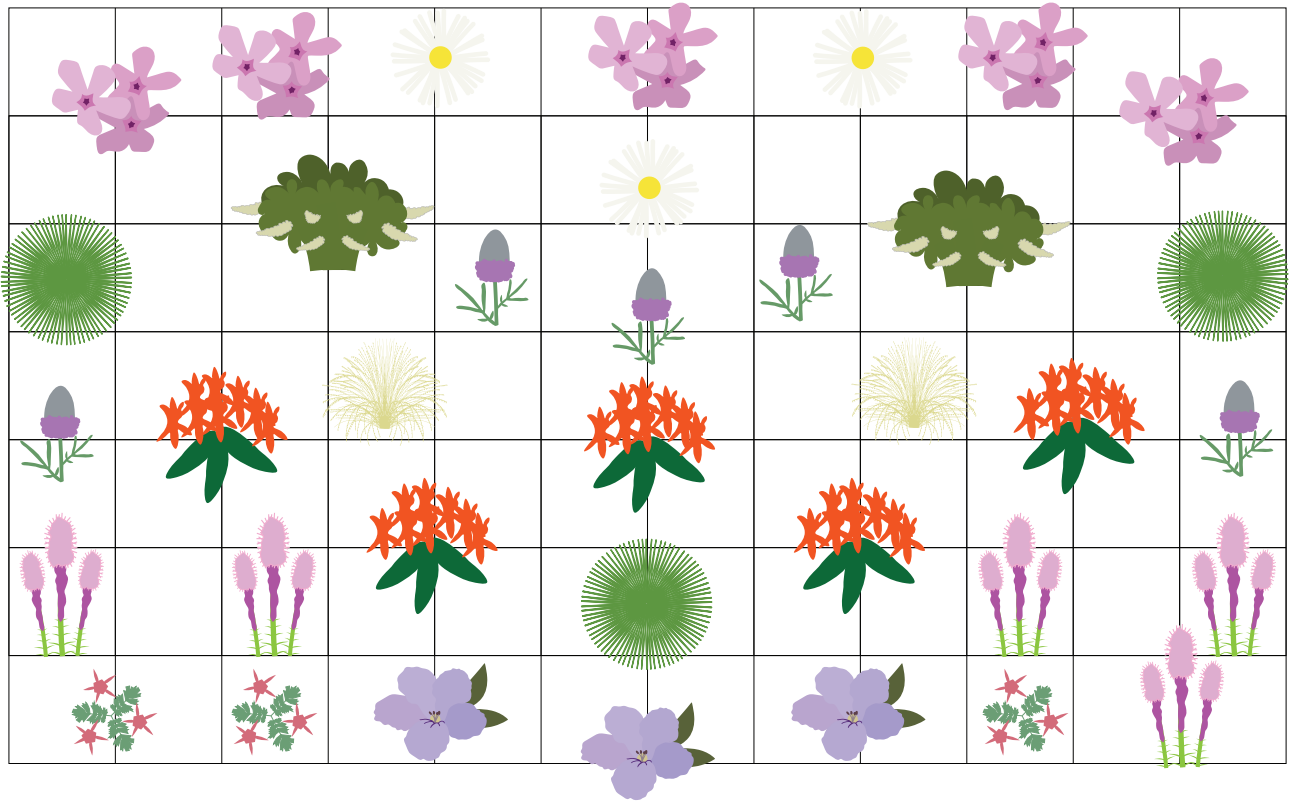
(507) 452-1362 | prairiemoon.com

BEE'S KNEES GARDEN SPRING 2024

LAYOUT SUGGESTIONS FOR PLANTING

← 12' →

7'



36 PLANTS | 8 Flowers, 2 Grasses | Covers 75 - 100 sq ft.



Dotted Blazing Star (5)



Cream False Indigo (2)



Prairie Phlox (5)



Butterfly Weed (5)



Purple Prairie Clover (5)



Wild Petunia (3)



Upland White Goldenrod (3)



Prairie Dropseed (3)



Prairie Smoke (3)



Side-Oats Grama (2)

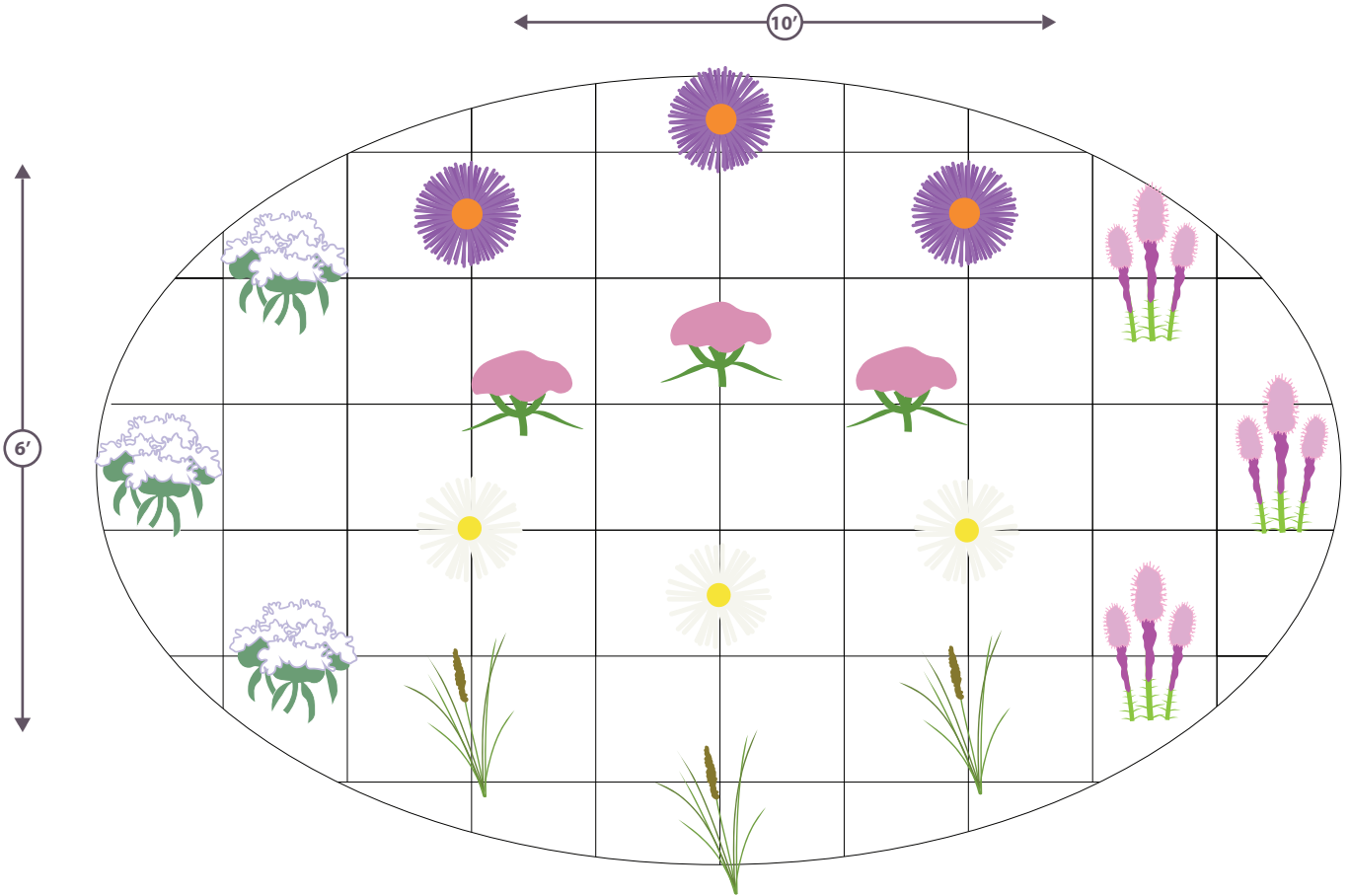


PRAIRIE MOON NURSERY®

(507) 452-1362 | prairiemoon.com

RAIN GARDEN PATCH SPRING 2024

LAYOUT SUGGESTIONS FOR PLANTING



18 PLANTS | 5 Flowers, 1 Grass | Covers 40 - 60 sq ft.

 Rose Milkweed (3)

 Mountain Mint (3)

 False Aster (3)

 New England Aster (3)

 Dense Blazing Star (3)

Brown Fox Sedge (3)

